

Step Planter

BEAUTIFY FLOWERS IN A QUARTER HOUR

With ProWood® pressure treated lumber, you can quickly build a stand for your potted plants.

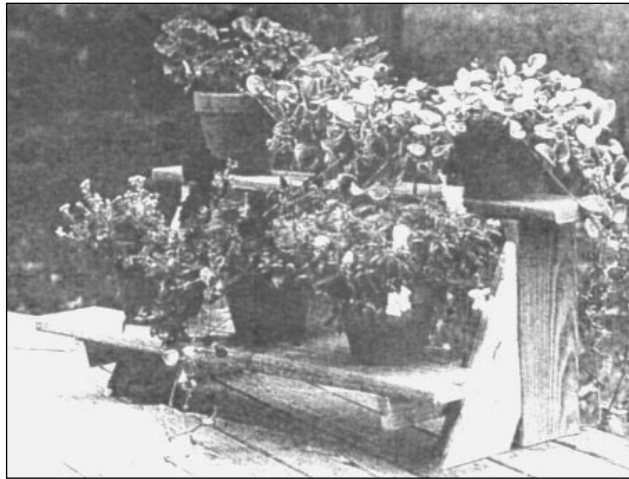
CUTTING THE LUMBER TO SIZE

*Always Wear Safety Glasses
(Refer to the list of
"Materials You Will Need")*

Using a fine-toothed wood saw or a circular saw, cut one 8'-long 5/4 x 6 ProWood® pressure treated board into two 38"-long piece for the top shelf and two 15"-long pieces for the angled legs. Next, cut your other 8'-long 5/4 x 6 ProWood® pressure treated board into one 30"-long piece to make the bottom shelf, and two 14"-long pieces for the vertical legs. Cut your 8'-long 2 x 4 ProWood® pressure treated board into two 16"-long pieces for the bottom shelf supports.

CUTTING THE ANGLED LEGS

Take one 15"-long board, measure up 3" along one side, and make a mark. Also measure up 5" on that same side and make



*This flower stand is so easy to build,
you'll probably want to make more than one!*

another mark. Draw a line connecting the mark at 3" to the bottom corner on the side opposite the mark. You should now have an angled line just above the bottom edge of your board. (See the "Making the Angled Leg" illustration.)

Next, draw a line from the mark at 5" to the opposite side's top corner (the farthest corner from the 5" mark). Your lines should now form two edges of a 11-1/4" x 6-1/4" x 15" triangle. Cut along the two marked lines to make an angled leg support. Repeat

Materials You Will Need

- ◆ Two 8' 5/4 x 6 ProWood® Pressure Treated Boards
- ◆ One 8' 2 x 4 ProWood® Pressure Treated Board
- ◆ One Box of 2" #6 Galvanized All Purpose Screws

(Continued inside)



Idea Builders™

this with your other 15"-long 5/4 x 6 board to make the other angled leg.

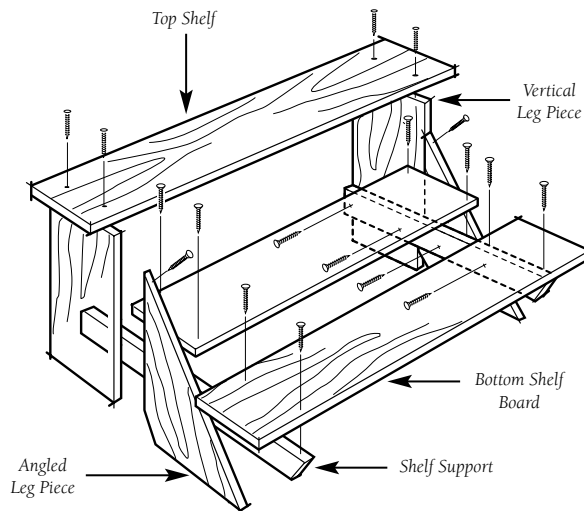
BUILDING THE LEG ASSEMBLY

Stand one 14"-long vertical leg piece on a flat surface. Next, place an angle leg piece next to the vertical leg so that the 11-1/4"-long side of your angled leg meets the side of your 14"-long vertical leg. Use a board to make sure that the bottoms of the two legs are even and the angled leg will meet the ground with the edge of its 6-1/4" side.

Attach these two leg pieces by driving a #6 galvanized all purpose screw through the angled leg into the vertical leg from the 15" edge of the angled leg. (Refer to the illustration above) (Pre-drilling your hole will help prevent splitting.) Repeat to build your other leg assembly.

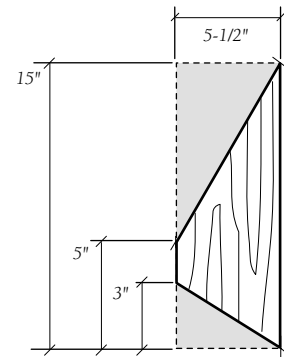
ADDING THE SHELF SUPPORT

Lay both leg assemblies on their sides. Measure up 5" from the bottom edge and draw a line parallel to the bottom edge on both leg assemblies. Place your 14" 2 x 4 bottom shelf support pieces so that the top edge is flush with the line. Attach it with screws to the leg assemblies.



ADDING THE BOTTOM SHELF

Set the 38" bottom shelf board on top of the bottom shelf support on one leg assembly and attach it using screws. Repeat this process on the other leg assembly. Place the 30" bottom shelf board behind the first and also attach it to the bottom shelf support boards.



Making the Angled Leg

MAKING THE TOP SHELF

Measure in 4" from each end of the top shelf and mark a line parallel to the end. Set your top shelf on top of both leg assemblies, using your marks to align it. Keep the front of your top shelf flush with the front of your leg assemblies. Attach with screws.

Basic Tool List

- ◆ Fine-Toothed Saw or Circular Power Saw
- ◆ Tape Measure
- ◆ Screw Driver

Always wear gloves, a dust mask, and eye protection when sawing, sanding, or machining wood.

© 1996 Universal Forest Products,® Inc.

The diagrams and instructions in this brochure are for illustrative purposes only, and are not meant to replace a licensed professional. Any construction or use of the product must be in accordance with all local zoning and/or building codes. The consumer assumes all risks and liability associated with the construction or use of this product. The consumer or contractor should take all necessary steps to ensure the safety of everyone involved in the project, including, but not limited to, wearing the appropriate safety equipment. Universal Forest Products, Inc., makes no warranty, either express or implied, and shall not be liable for any damages, including consequential damages.

Do More With Every Project!