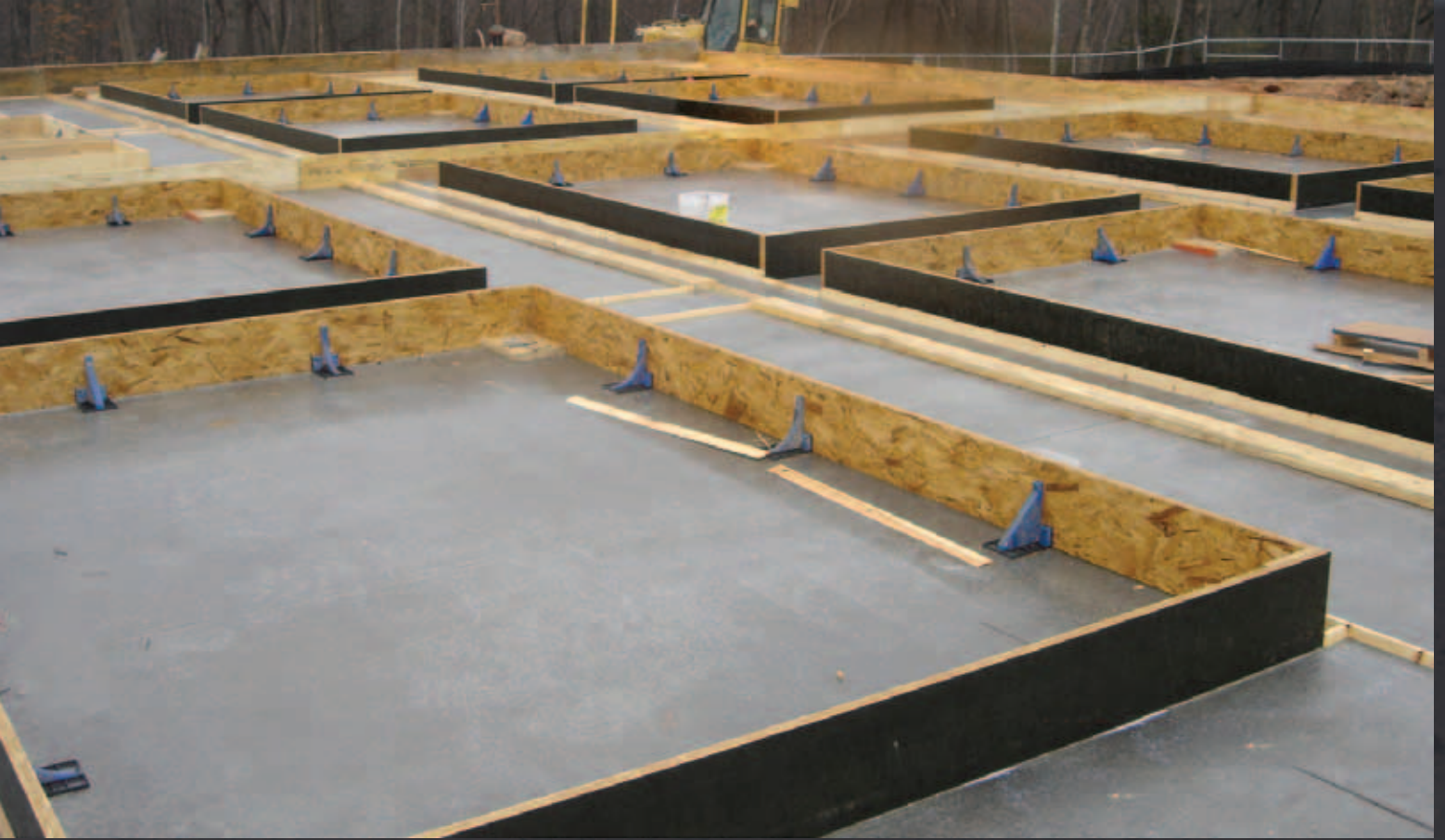


CUSTOM CONCRETE FORMING MATERIALS

# Precast/Tilt-Wall



Helping you take form,  
pour after pour.<sup>™</sup>



#### **No job too big. No form too small.**

Whether you specialize in tilt-wall or precast forming, Universal has the right products, service support and field expertise to get your project off the ground in a hurry.

Universal's concrete forming products can be used for both precast jobs and for the tilt-wall industry. Our forms are available in a variety of lengths and depths in dimensional lumber and EWP, with species selected specifically for concrete forming.

With Universal's efficient distribution of custom concrete forming products, everything is delivered and ready-to-use. There's no need for on-site cutting, which helps keep the area cleaner and reduces labor, lead time and waste.

#### **Our core products include:**

- Concrete forming plywood
- Chamfer
- Reveal
- EWP
- LVL/OSL/LSL/OSB
- Dimensional lumber
- Dunnage

#### **Architectural precast**

Our on-site project consultants will assist with delicate architectural forming processes to ensure you get exactly what you expect in the precast process. Universal will also supply dunnage for your architectural precast product, to eliminate scratching and abrasions during transportation. By running our own equipment, we're able to help with your just-in-time delivery needs.

#### **Coast-to-coast coverage**

Thanks to Universal's coast-to-coast coverage, you can rest assured we'll have the right forming lumber to support your needs, no matter where you're located. In fact, each one of our plants works directly with the mill to make certain the lumber products you need are available.

We're sure you'll be impressed with how we'll help shape your next project. We're on job sites every day assisting architects, contractors and developers, ensuring the proper amount of the right material is purchased.

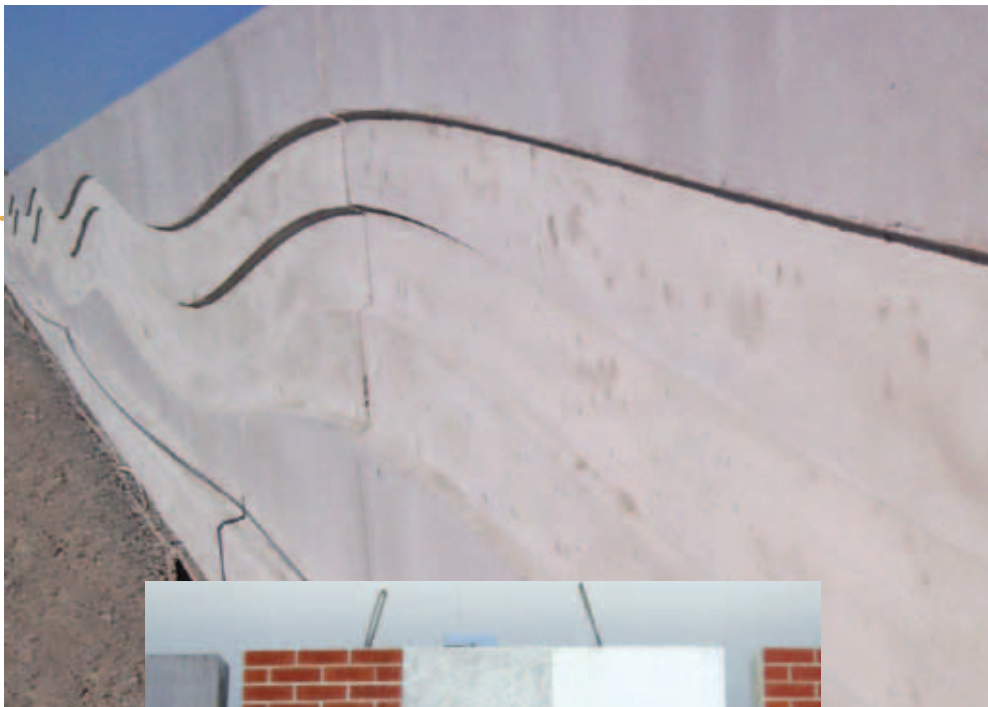
#### **Just-in-time forms**

We work directly with the mills—and that makes Universal unique. We're able to supply you with tilt-wall and precast forming material on a just-in-time basis. We'll even make you look good by helping you stay on schedule and save on lumber purchasing.

### **National single-source supplier benefits**

By leveraging the production and service capabilities of our many nationwide facilities, we can deliver custom-specified forming products direct to the job site within two days. Our team will also control the delivery schedule when poor weather conditions arise, so products are not exposed to the elements for extended periods of time.

Working directly with our manufacturing facilities allows us to eliminate the middle-man—resulting in quick, accurate deliveries and big time savings. If custom forms are needed, our team will move quickly to get your order processed and delivered. When timing is critical or when product is needed in multiple locations, Universal delivers on time, every time.



Universal Forest Products brings its nationally known sales and service model to concrete forming. We have created a team of product experts whose sole focus is providing a complete range of products for concrete forming.

Direct from one of our lumberyards or from the mill, Universal Forest Products has the broadest range of wood-based forming products that help you get the job done right, pour after pour.



## About Universal

Founded in 1955, Universal Forest Products, Inc. is headquartered in Grand Rapids, Michigan, and provides capital, management and administrative resources to subsidiaries that design, manufacture and market wood and wood-alternative products for many industries nationwide. Universal's subsidiaries also provide framing services for the site-built market and forming products for concrete construction.

Through its network of subsidiaries and affiliates, Universal Forest Products engineers and manufactures:

- Wood and wood-alternative products for Do-It-Yourself retail home centers
- Engineered wood components for the site-built construction market
- Specialty packaging, crating and components for the industrial market
- Structural lumber products for the manufactured housing industry

The people of Universal have a work ethic and a collective determination unparalleled in American industry today. The company's senior management enjoys virtually zero turnover—most senior executives have been with the company for decades—which accounts for the breadth and depth of the company's knowledge and relationships.

Universal's operations have facilities throughout North America. To learn more about Universal's concrete forming products e-mail [concrete@ufpi.com](mailto:concrete@ufpi.com), visit [www.ufpiconcrete.com](http://www.ufpiconcrete.com) or call 866-730-3249. Visit [www.ufpi.com](http://www.ufpi.com) for more information about Universal Forest Products.



**Universal Forest Products**

[www.ufpi.com](http://www.ufpi.com)

For more information, call 866.730.3249

© 2011 Universal Forest Products, Inc.  
All rights reserved. The tree logo is a registered trademark  
of Universal Forest Products, Inc., in the United States.

6500ptw 3/11